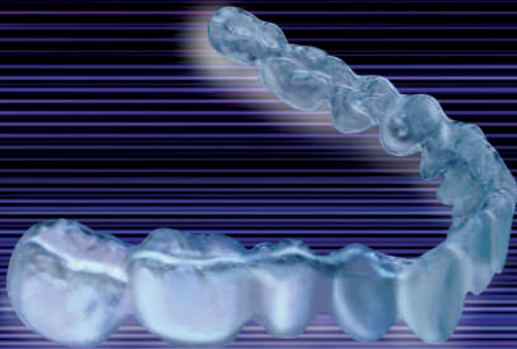


POTENTIAL ADVANTAGES

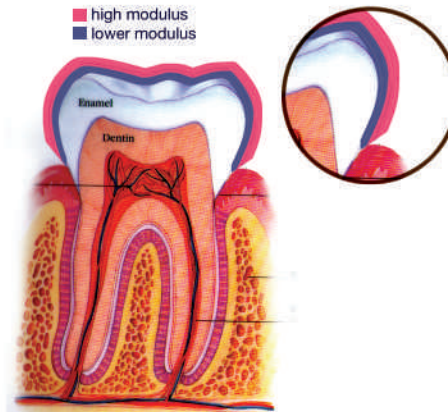
- LOWER COST
- GREATER COMFORT
- LESS DENTAL VISITS
- LATEST TECHNOLOGY
- STRUCTURAL MEMORY
- MICROBIAL RESISTANCE
- NO DENTAL ATTACHMENTS



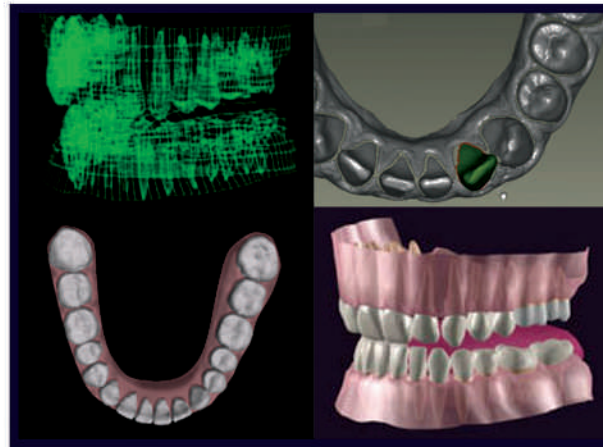
INVISIBLE REMOVABLE ORTHODONTICS DESIGNED WITH A LOWER MODULUS (SOFT) LAMINATED INNER LINING FOR POSSIBLE GREATER PATIENT COMFORT, EASE OF ALIGNER INSERTION & REMOVAL AND LESS LOCALIZED STRESS.

NUBRACE .COM
INVISIBLE REMOVABLE ORTHODONTICS

NUBRACE .COM
INVISIBLE REMOVABLE ORTHODONTICS



Dual Layer with
Lower Modulus Liner
invisible removable orthodontics
NUBRACE



www.NuBrace.com

416 N. Bedford Dr. Suite 307

Beverly Hills, CA 90210

NUBRACE .COM
INVISIBLE REMOVABLE ORTHODONTICS
A PRODUCT OF
SMILE90210



COMING SOON



POTENTIAL ADVANTAGES

SCIENTIFICALLY PROVEN

STRUCTURAL MEMORY

- NuBrace aligner consist of an ability to maintain its shape referred to as, “structural memory.”
- The aligner is adapted to the computer generated orthodontically positioned model for more accurate tooth movement.

DENTAL ATTACHMENTS

NuBrace has developed the “BAR” technique which could eliminates dental attachments that are invasive, may damage teeth and hinder oral hygiene.

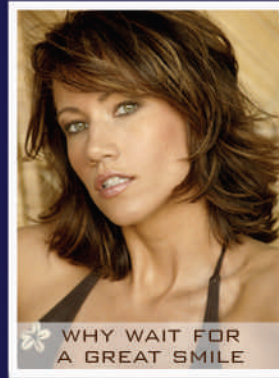
BAR is achieved by placing grooves in patient’s stone model which translates into a BAR on the aligner for greater orthodontic control.

ANTI-MICROBIAL

The inner lining of NuBrace aligner is laminated with an FDA approved polymer.

The inner liner offers outstanding abrasion resistance, impact strength, toughness and flexibility.

It also exhibits excellent hydrolytic stability and is microbial resistant.



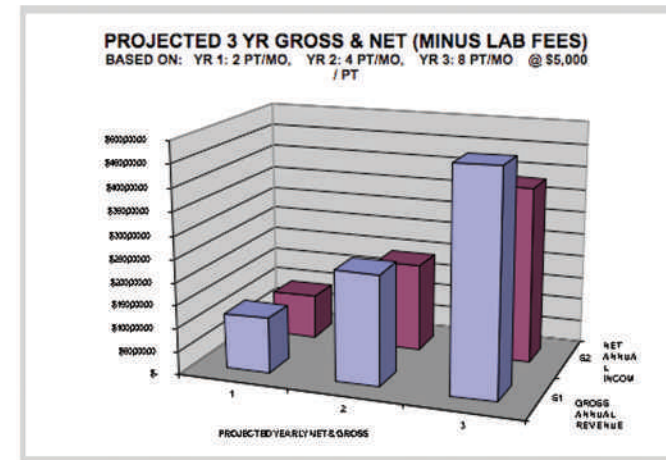
NuBrace™ Dentists have 3 option on every patient visit:

- 1.) Continue as Plan
- 2.) Modify Lab Slip by selecting tooth number, direction of movement and degree of movement.
- 3.) Submit new impression

This allows a sefty net which enables Dentists to modify treatment plan on a visit-to-visit basis thereby achiving an optimize case result

STREAMLINED PROCESS

- 1.) Web based applications.
- 2.) Computer technology allows practitioners to manipulate their patient’s teeth online.
- 3.) Online laboratory prescription.
- 4.) Online seminar and examination.
- 5.) Online search and secure dentist by zip code.
- 6.) Online financing for both patients and doc tors through a credible banking firm.



Potential 3 years Gross & Net Proffit
less patient visit + less chair time = greater profit



From Dr. Tom Kalili, Founder and CEO, “I would like to thank those who have paved the way for researchers like us to build upon. I am hopeful that support from my friends and family, 20 years of research, patents and global publications will allow a path for others to pursue their dreams as well in the face of world peace.”